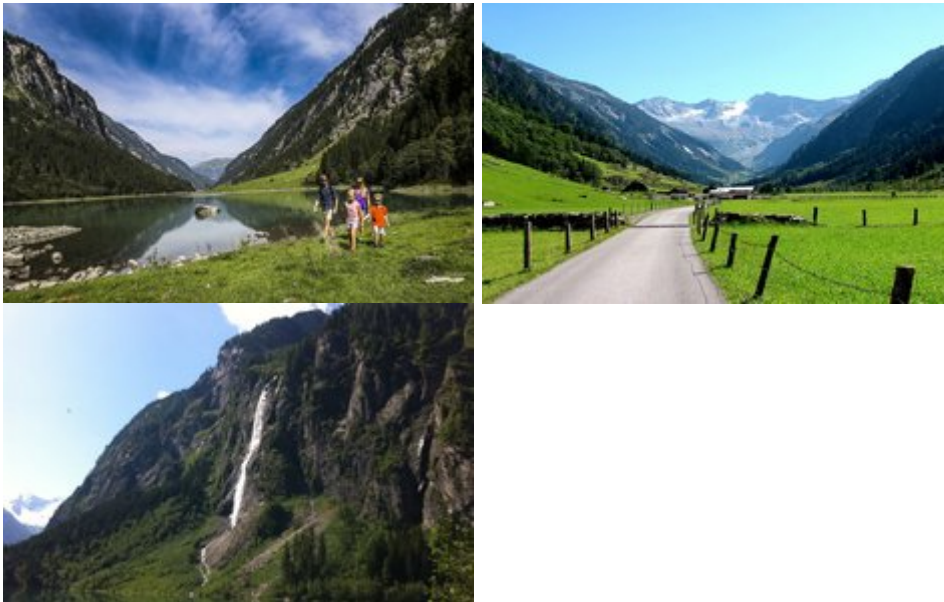


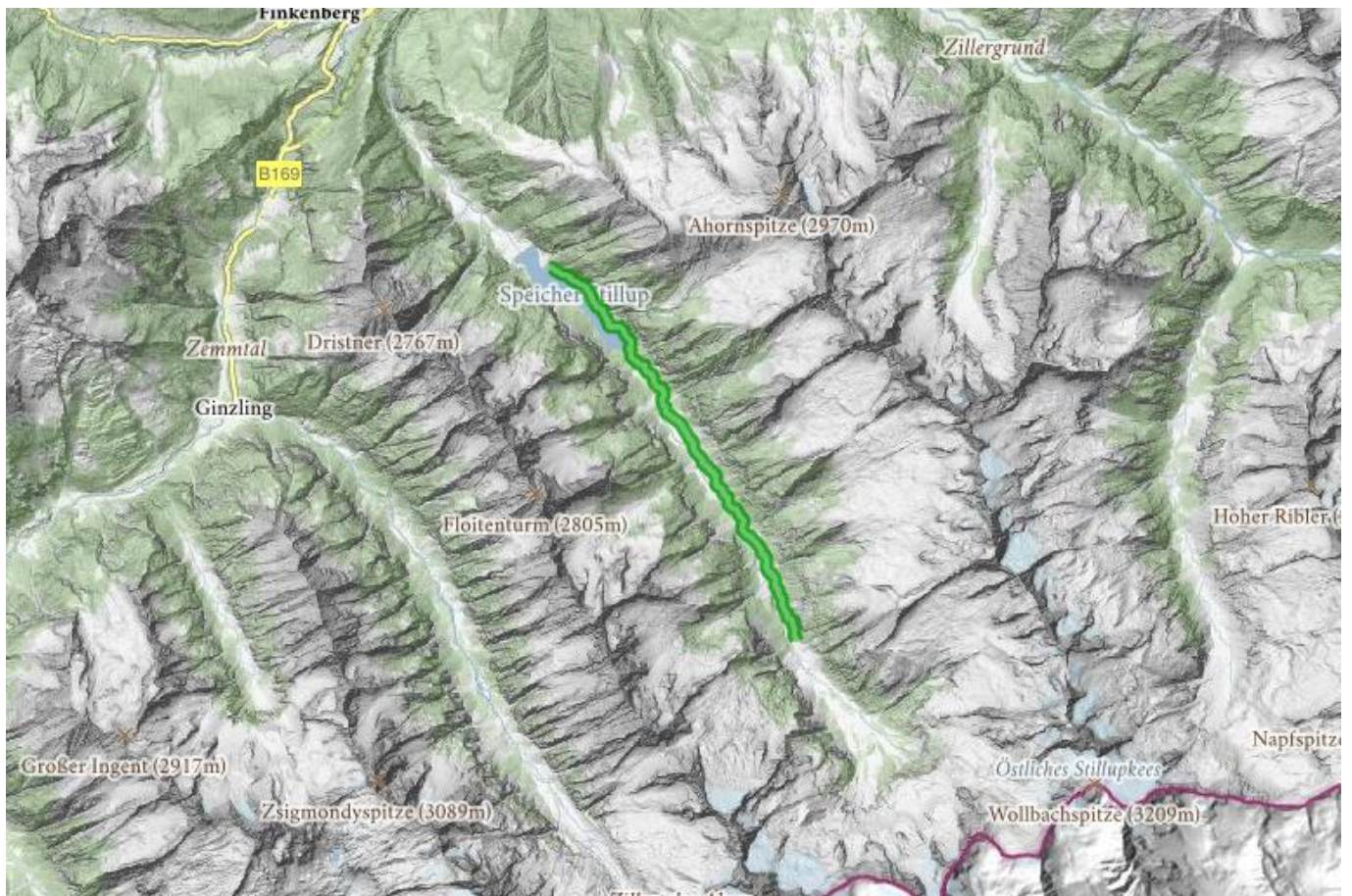


## HIKING TOUR WASSERFALL - GRÜNE WAND HUT

**Take the bus service in Stilluptal to Gasthaus Wasserfall. You can comfortably walk to the Grüne Wand Hut from Gasthaus Wasserfall in 2.5 hours.**



A private mini-bus service takes you from Mayrhofen into the romantic Stilluptal Valley. From Gasthaus Wasserfall, a hiking trail leads along the banks of the Stillupstausee Reservoir. There is a sandbank at the end of the reservoir where people love to barbeque and swim on balmy summer days. The trail continues through a forest and then on through alpine pastures to the Stillupperhaus, where you can enjoy some welcome refreshments before continuing the hike gradually uphill to the Grünen Wand Hut. You can catch a bus back from the Grünen Wand Hut to Mayrhofen. The path is suitable for prams.



Arrival: Public transport bus Otto Kröll & Hermann Thaler  
 Timetable: <https://www.mayrhofen.at/en/service/timetables/>  
 Parking area at Gasthaus Wasserfall Individual Arrival:  
<https://www.oeamtc.at/routenplaner/>

Tourismusverband  
 Mayrhofen-Hippach  
 Dursterstrasse 225  
 6290 Mayrhofen  
 +43 5285 6760  
[info@mayrhofen.at](mailto:info@mayrhofen.at)

Difficulty: easy  
 Altitude: 354m  
 Highest Point: 1431m  
 Track length: 14.6km  
 Duration Ascend: 2h 30min  
 Duration Total: 5h  
 Starting point: Gasthaus Wasserfall  
 Endpoint: Grüne Wand Hütte  
 Best season: May - October  
 Family hike  
 Stroller-friendly hike  
 Sea hight: 1126m  
 Altitude: 354m